



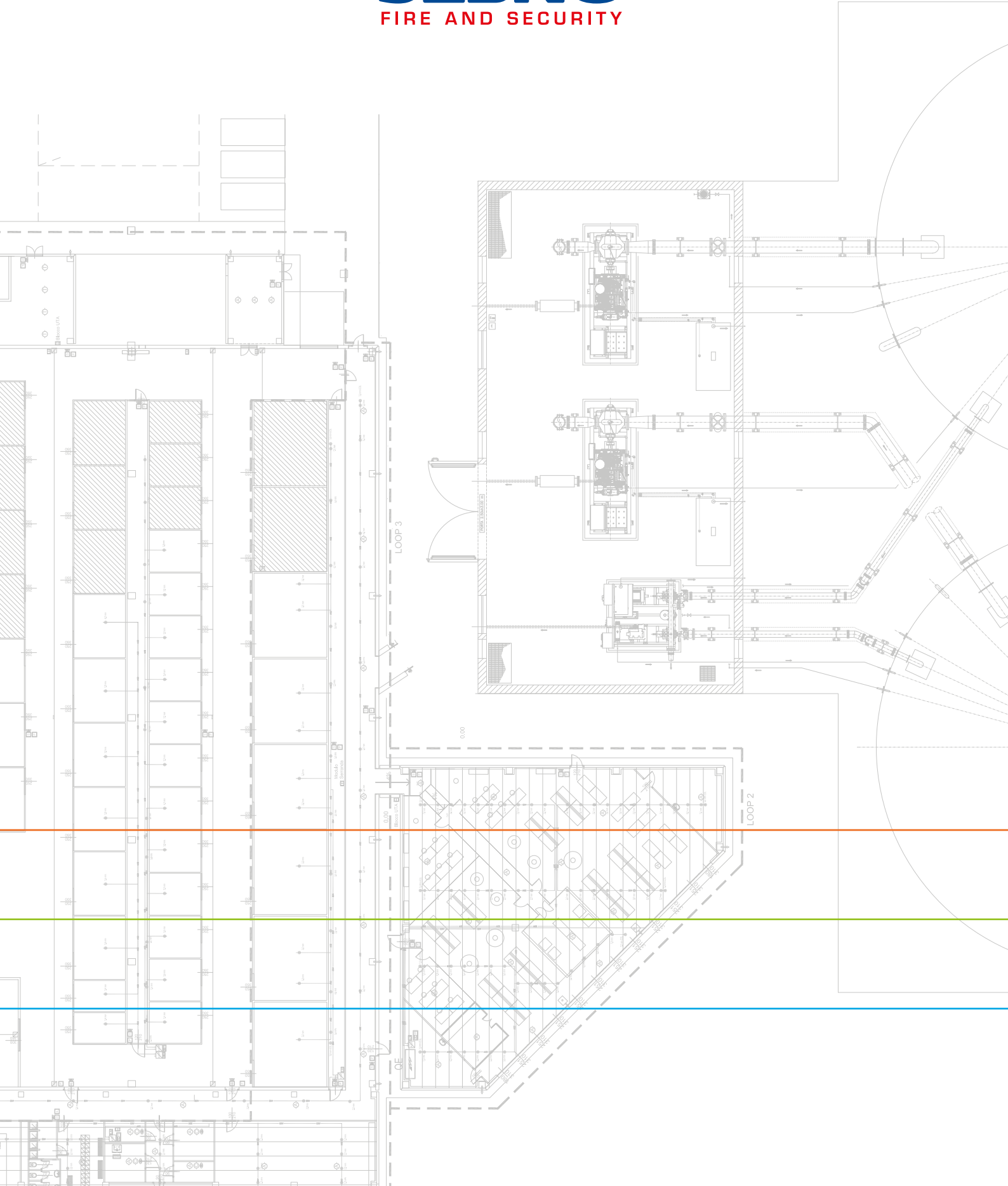
SEBINO®

FIRE AND SECURITY



SEBINO®

FIRE AND SECURITY



Three Units to expand our service capabilities

The consensus gathered over the years from a demanding clientele, but willing to recognize quality, has pushed us to work and structure ourselves to meet the new demands of a constantly changing market.

The SEBINO Group has therefore expanded its scope, structuring itself into three internal divisions, separate in terms of skills and personnel, but perfectly synergistic with each other.

We address security issues broadly, ranging from fire prevention, to anti-theft, access control, to video surveillance.

The common denominator is competence in design, the use of the most up-to-date systems, and reliability in installation.

Finally, who better than us, who have designed and installed the system, is able to keep it efficient continuously? This is why the Service division is the best solution for all post-sales service: it is an integral part of the SEBINO Group, a single point of contact for all the security needs of companies.

FIRE PROTECTION

SECURITY

SERVICE



Safety and Professional Attitude: we don't play with fire!

Our story is typical of small Italian entrepreneurship that grows thanks to serious and constant work, enriched by increasingly advanced and thorough skills. It was Marco Cadei who started the business in 1979 with all the determination that Lombards are known for.

Years of relentless work and growth of the small structure, carefully selecting people who shared the principles on which the business was founded.

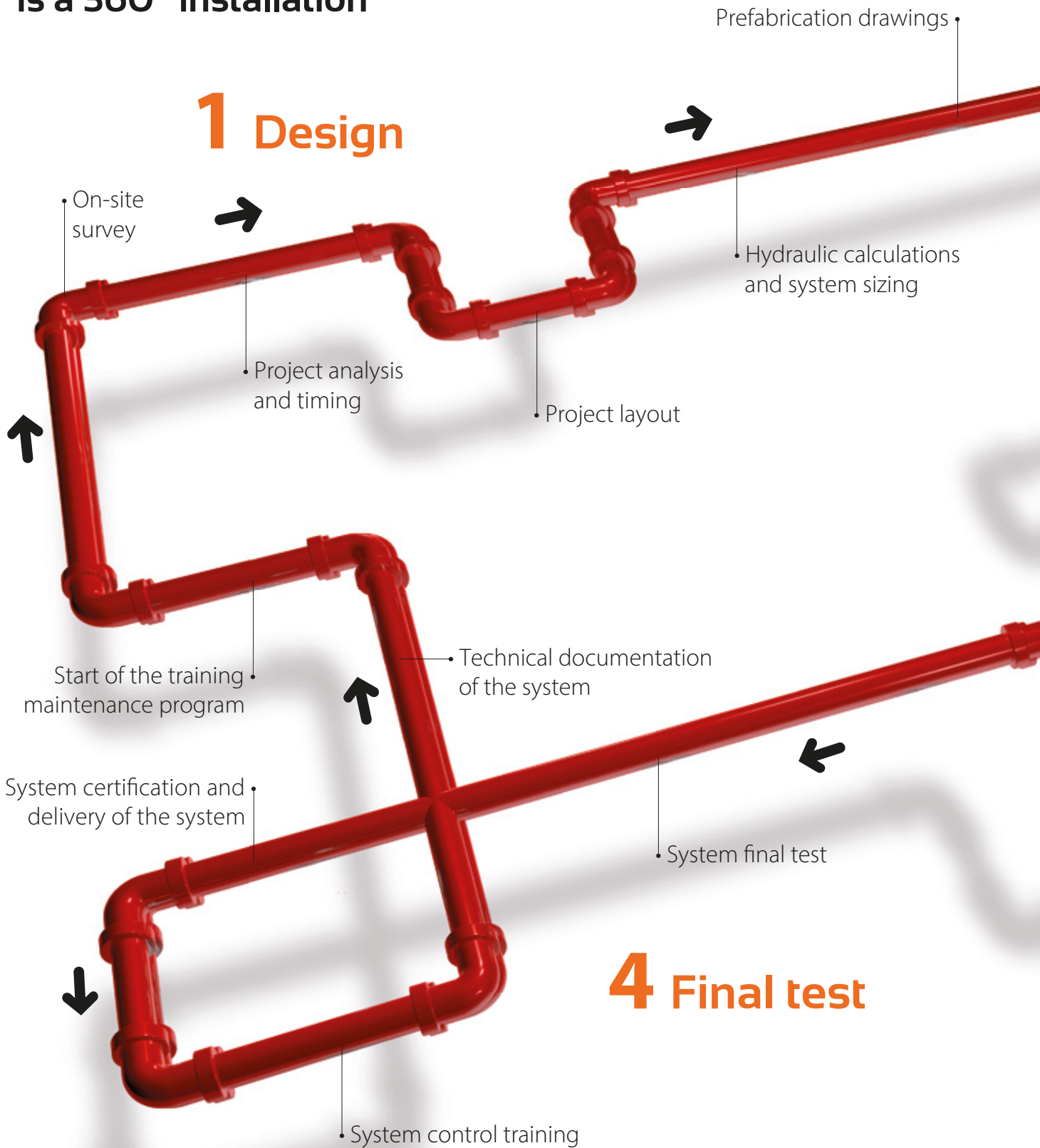
Sebino continues the corporate path that he inspired, without betraying the love for work done with artistry and respect for the customer who recognizes the quality of what is offered to them.

Over the years, Sebino has gained considerable experience in design, procurement supply and maintenance of hundreds of Fire and Security systems for various critical infrastructures and merceological sectors including: Logistics, Data Centers, Manufacturing Industries, Large Scale Distribution, Healthcare and many more.

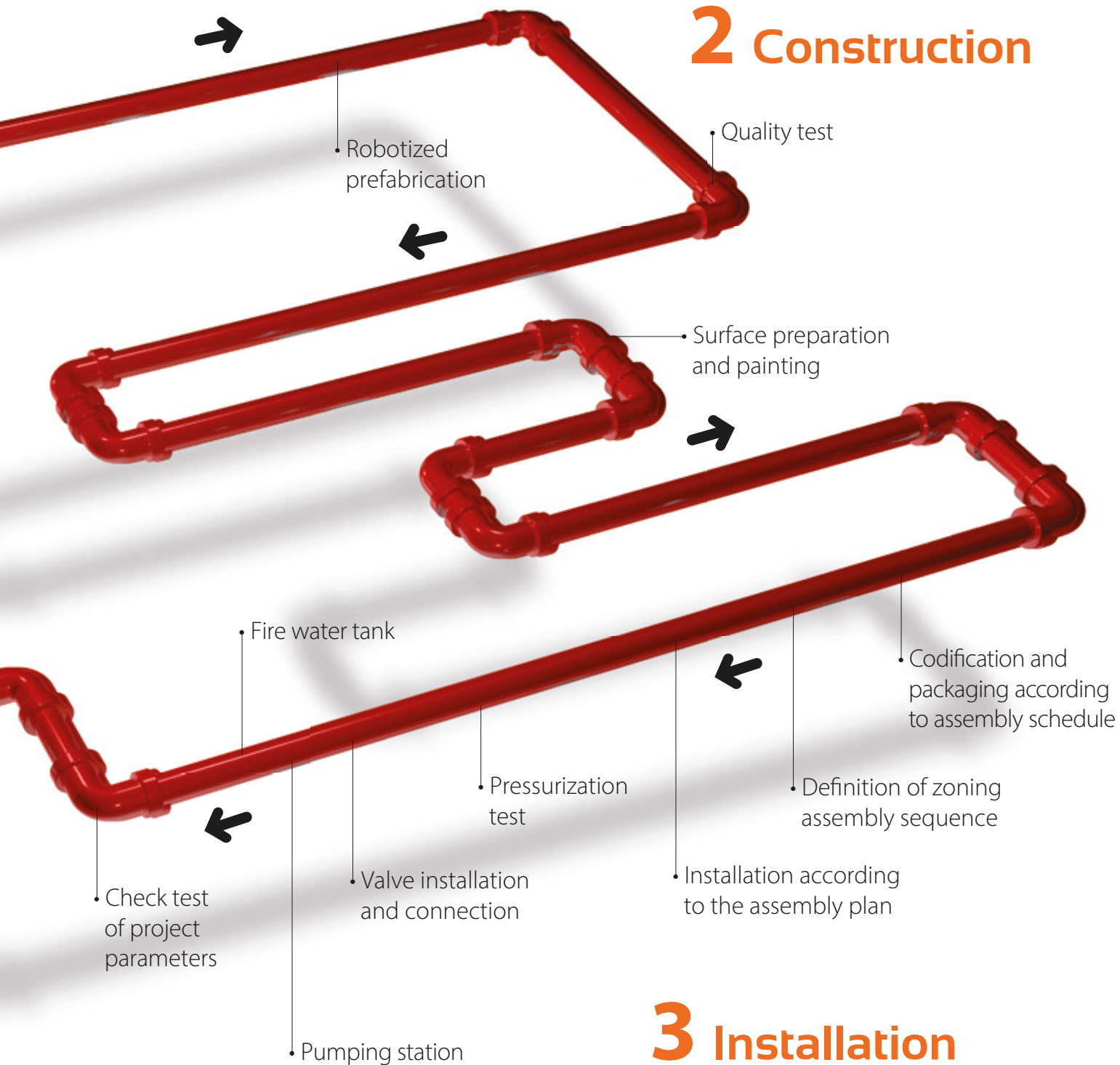


Complete Cycle Total Protection

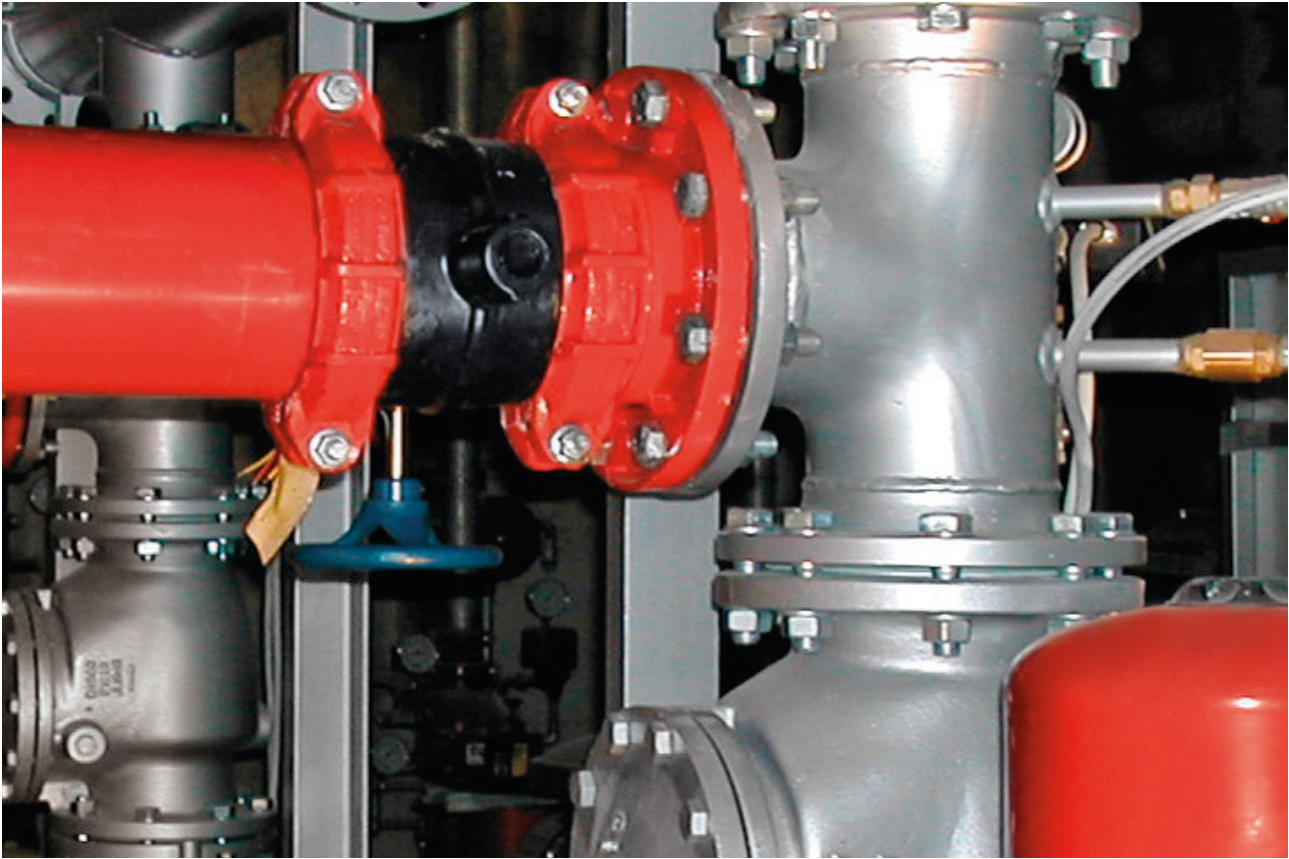
Each time our intervention
is a 360° installation



2 Construction



3 Installation



Competence and high-level tools

Our intervention normally starts with the analysis of risks and the environment to be protected. Once specific hydraulic calculations are performed according to national or international standards, we proceed to the drafting of construction drawings, which allow for production on a robotized prefabrication line.

After passing a series of quality tests, the prefabricated parts are powder coated, coded according to the assembly plan, and packaged accordingly.

Once the prefabricated structures are installed according to the assembly sequence, the essential parts of the plant, such as valves, pumping station, and water reserve, are constructed.

After verifying the achievement of the project parameters on the installed system with specific tests, we proceed to the testing with the customer, not before involving the designated management personnel in a plant management training.

Standard compliance:

NFPA

FM GLOBAL

UNI EN

SR EN

P 118-2



SR EN

P118-2



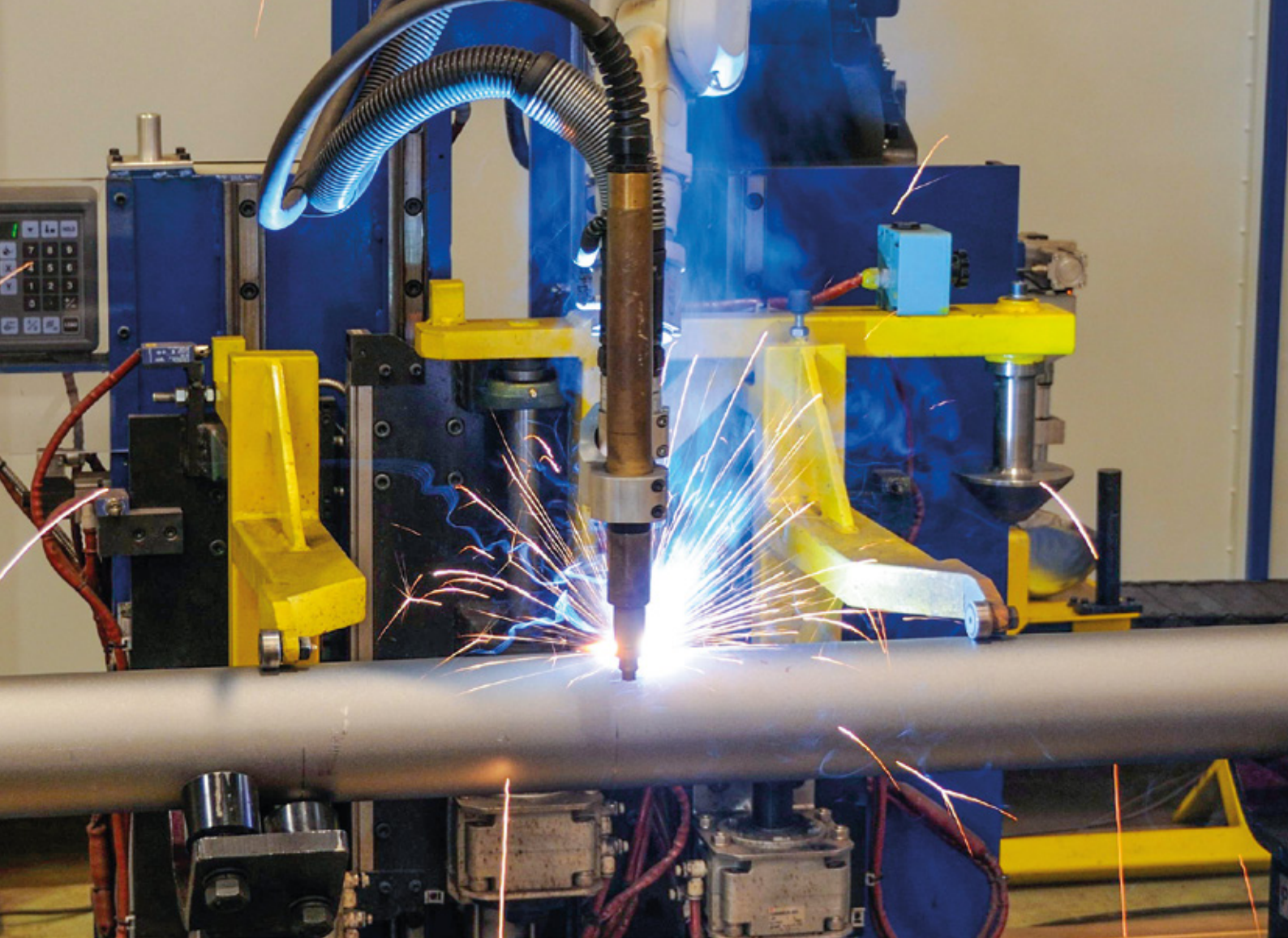


From **Design**, to **Final Test** and **Maintenance**. We do everything in-house.

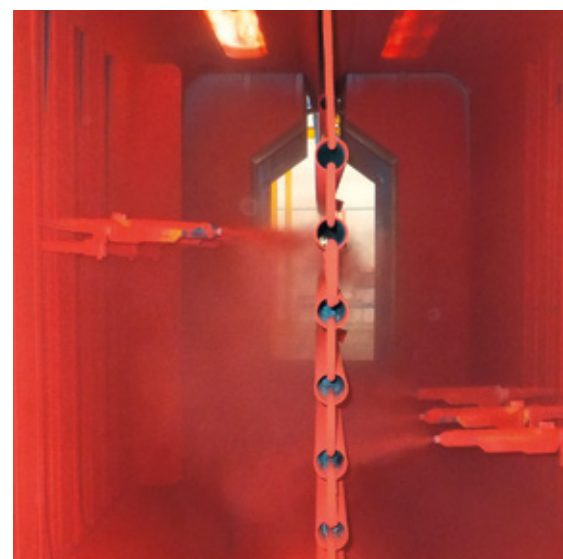
Providing a truly complete service does not only mean coordinating purchases of components and services from partners and suppliers but managing internally and entirely all the phases of the work.

This was our choice and the market has recognized its validity.

The workshop works competently, in compliance with the ISO 9001.2015 standard, on well-detailed projects for the construction of manifolds and branches up to 9 meters, using a robotic production plant that practically eliminates the risk of human error. The branches and manifolds produced in this way are FM Global approved. The raw material is carefully chosen from European production of seamless or



welded pipes, which thanks to rigorous quality control, allow for economic savings alongside absolute safety, in compliance with the UNI EN10255 – 10216-1 – 10217-1 standards. Welding and painting phases are also carried out internally for a more directly controlled quality. Our warehouse is always well-stocked and our employees are able to competently handle every phase of the work, from design to post-sales maintenance.







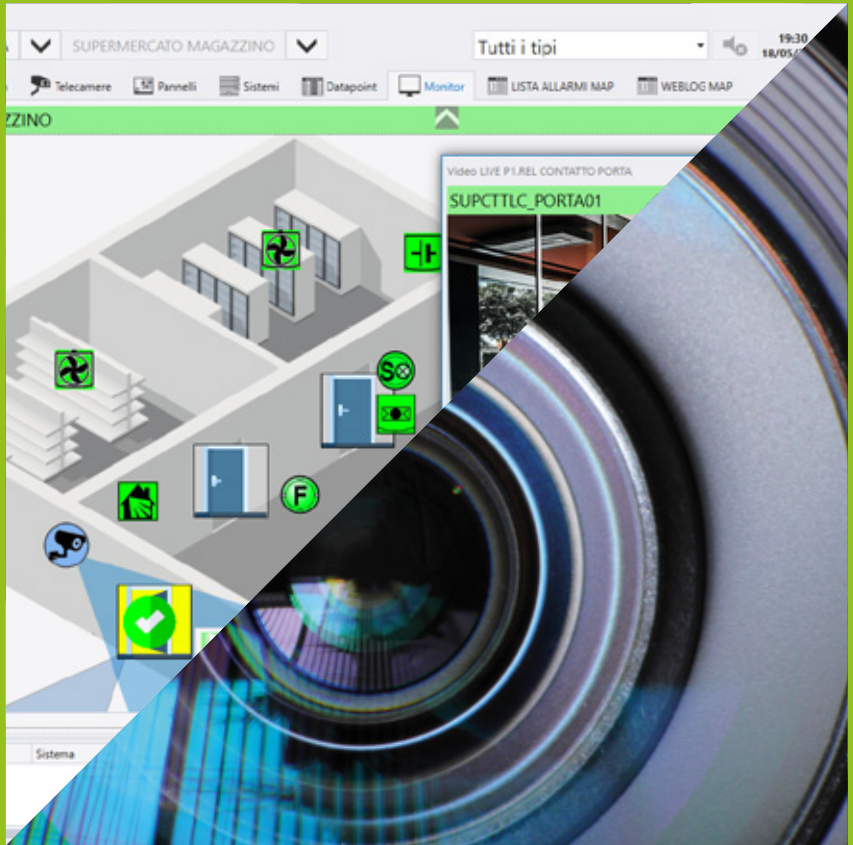
Installation: efficiency and quality

The installation phase usually requires a relatively long stay on site to develop the project and adapt the components. Installing a prefabricated system allows for very short assembly times and precise and reliable work of superior quality. Marking the pieces during the construction phase in the workshop allows for an analytical dossier of each individual piece with all the construction, dimensional, and technical information, and ensures compliance with the assembly plan, avoiding last-minute errors or makeshift solutions. This quickly and smoothly leads to the functional start-up and testing of the system. At the time of delivery, our adequately trained staff first carries out the system testing phase where operating data are recorded, verified, and analysed, before proceeding to transfer ownership of the system itself. We provide the customer with complete specific documentation for functional verification and proper use of the system; we also outline a procedure for identifying any defects and a list of spare parts that may be necessary during the life of the system. At this point, system certifications and specific technical documentation are provided. Following a training dedicated to the maintenance managers of the system, the maintenance program is defined and implemented in accordance with the standards for perfect system efficiency.

Fire fighting systems:

- **sprinklers**
- **foam**
- **deluge**
- **uni 45 / uni 70 hydrants**
- **carbon dioxide, chemical and inert gases**
- **water mist**
- **aerosol spray**





Security is a certainty

The mission of the "Security" division is to protect its customers with Special Systems tailored to specific needs, ensuring the peace of mind that comes from deep knowledge of the sector.

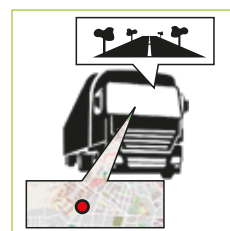
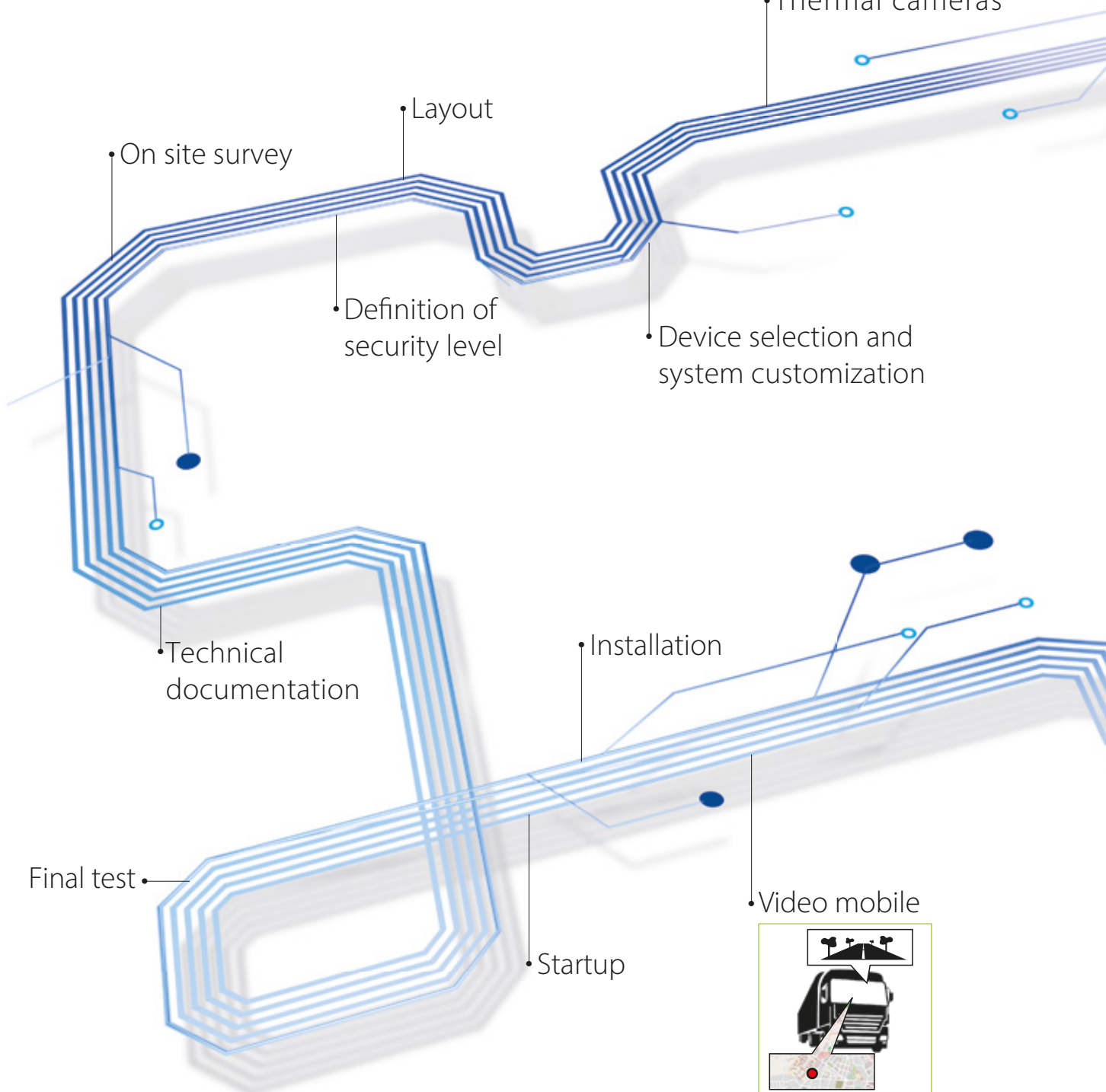
Professionalism, experience, and passion, a highly qualified and dynamic team, and a constant search for the most innovative technologies allow us to meet the most demanding requests, guaranteeing the quality and reliability of the components we use.

Peace and reliability.
Everywhere. All the time.

**The latest technology
controlled by skilled engineers.**



CCTV - LiDAR -
Thermal cameras





• Access control



• Gate control

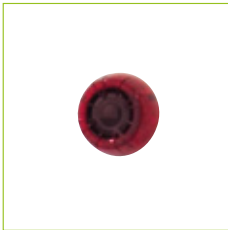


• Fire detection

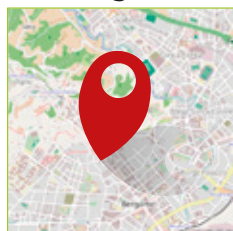


• EVAC systems

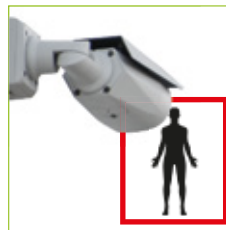
• Fire alarm



• Satellite tracking



• Advanced video analysis systems



• Plate recognition

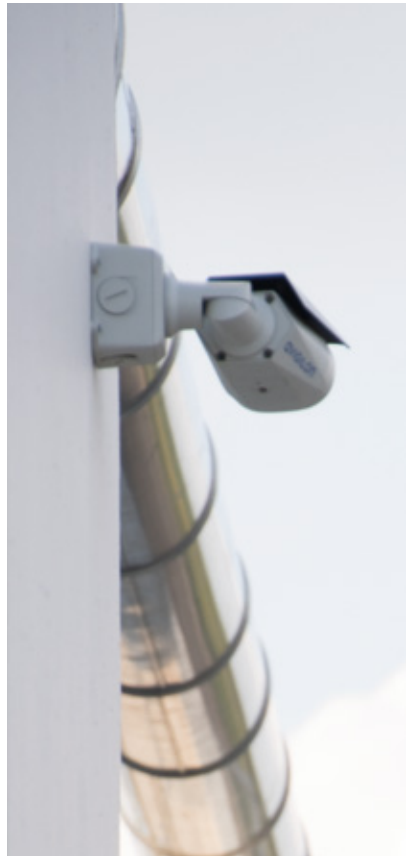




Complex systems, easy **management**

We know how to carefully listen to the customer's needs in order to develop the most suitable offer in terms of systems and components. Our designers pay great attention to their technical updates, as the market evolution is fast and constant. Only with a perfect knowledge of the available innovations we can create cutting-edge and truly functional proposals to easily and safely manage even the most complex situations. We are a qualified partner for the implementation of all security systems in the industrial, public, and civil sectors, guaranteeing personalized and high-performing solutions.





Areas of intervention

Fire detection

A fire detection and alarm system consists of electronic devices designed to quickly detect the presence of a fire and provide a series of signals and indications for emergency management.

An automatic detection system allows to:

- facilitate timely evacuation of people, animals, and property;
- activate intervention plans;
- activate fire protection systems (manual and/or automatic fire suppression).

Intrusion alarm

Thefts, robberies, intrusions are unfortunately increasingly common realities. With a wide range of innovative, technologically advanced, efficient, readily available, and easily accessible solutions, it is possible to defend against these incidents and increase the security of one's business. The burglar alarm systems we design are versatile and reliable, able to meet the most varied needs.

Video surveillance and videoanalysis

By video surveillance system (or CCTV) we mean a system of cameras that transmit signals to specific or limited sets of monitors, video recorders, or servers. Traditionally, CCTV systems were created to simultaneously monitor and control multiple critical areas, monitoring flows, recording and reporting unauthorized intrusions, and detecting suspicious or dangerous events. Today, technology offers much more than simple surveillance of goods and people, allowing to anticipate problems and stop them at the source. Video analysis CCTV surveillance systems, complemented by the use of artificial intelligence, in addition to serving as a deterrent to wrongdoers, are

effective in real-time detection of strangers entering private properties and facilitating the reconstruction of criminal events (robberies, thefts, vandalism). The use of video analysis allows the management of complex rules to generate alarms: for example, the passage of people, removed objects, or the passage of a certain vehicle, etc.

Thermal cameras and predictive thermography

Thermal cameras are designed for security applications. Since thermal cameras detect heat, they can detect intrusions in all lighting conditions, including complete darkness, rain, light fog, and smoke.

Predictive thermography uses temperature variations as an indicator of anomalies in production processes, hazardous material processing, and electrical components to promptly prevent temperature increases and intervene to prevent combustion initiation.

Access control

With the most innovative technologies, we provide monitoring of access in various environments as well as management and control of the flow of people or vehicles.

EVAC evacuation systems

Sebino designs EVAC (emergency vocal evacuation systems) with loop distribution modules, loudspeakers on site and system self-diagnosis.

LiDAR perimeter volumetric protection

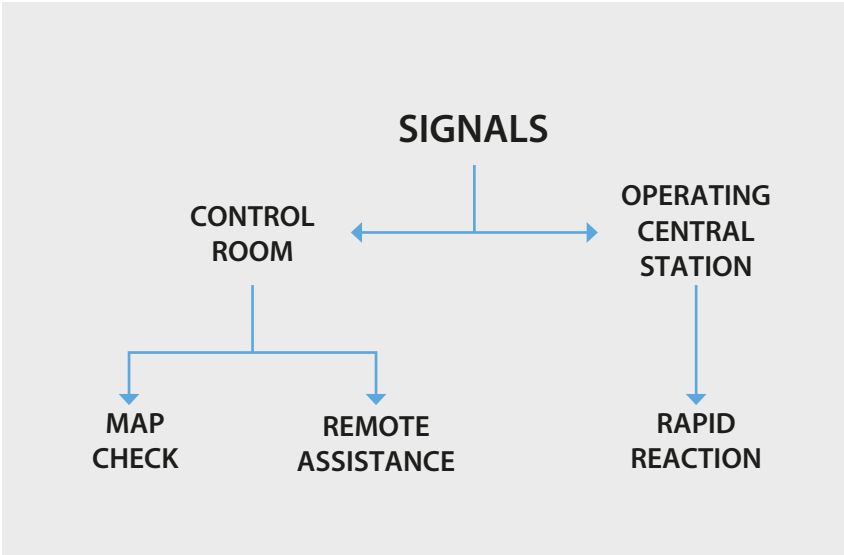
Thanks to the infrared light emitted by LiDAR, it is possible to accurately recognize the point where an intrusion occurs. Through the artificial intelligence equipped in these devices, it is also possible to determine whether the intruder is a human, an animal, or a vehicle.



At your service

Investment for the realization of each plant, fire protection, security, smoke detection, CCTV... only makes sense in the face of the perfect efficiency of the plant at all times: a team of technicians is available to our customers for all services following the supply.

System monitoring and signal management



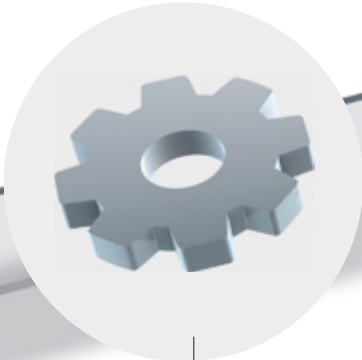
We take care of your systems.



Control room

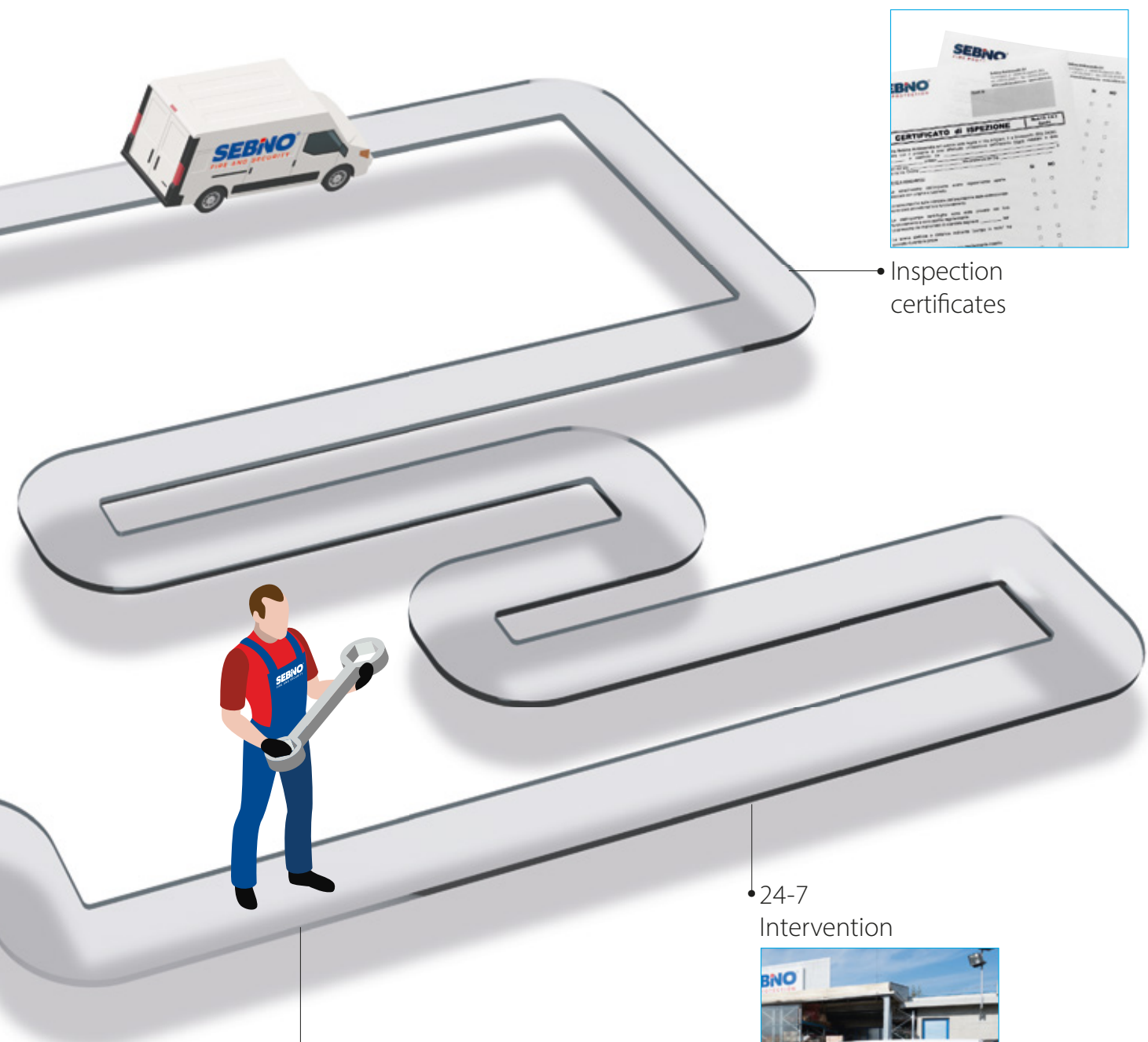


Ordinary maintenance



Spare parts





• Inspection certificates

• Extraordinary maintenance

• 24-7 Intervention





Interactive technological control: **SebinoConnect**[®]

In order to guarantee the correct functioning of the systems in every technological component over time, Sebino in addition to the appropriate maintenance activities, makes its Control Room available to the customer. To overcome anomalies related to malfunctions and/or faults in system components, whether they are fire, intrusion and/or CCTV systems, it is possible to activate monitoring and/or teleassistance services, thus relieving the customer of necessary activities to maintain a high level of security and ensuring their execution through a specific service contract. The service involves centralizing the systems provided to the customer at the Control Room so that the operator can handle every single anomaly through the reading of graphic maps reproducing the position and type of each component of the installed system. This allows the operator to view anomalies in real-time and act directly on the systems for: arming, disarming, silencing events, restoring faults, excluding and including sensors or sectors, changing codes, downloading events from memory, testing device function and countless other operations as if they were on-site.



Activities included in the service:

- daily connection via secure connection to the client's systems with verification of the status of all system components;
- issuance of reports at defined time intervals through a checklist model on the status of the systems, anomalies detected, and suggested remedies for restoration.

Combined with the monitoring contract, it is possible to activate the teleassistance service, provided through a specific contract. The service involves, in case of anomalies, automatically or with the customer's authorization, the following activities aimed at restoration:

- remote intervention by the monitoring operator;
- involvement of internal second-level specialized figures;
- activation of an on-site technical intervention.

These services are detailed and personalized according to the specific needs of the customer.



Routine maintenance

Once the system is installed, we offer a competent routine maintenance service that always ensures the perfect efficiency of the system. The frequency of checks will be as required by specific regulations (3 months, 6 months...) and in any case suitable to verify the perfect functioning of each part of the system so that it is always ready to intervene. In the case of anomalies beyond normal maintenance, we immediately inform the customer, so that they are aware of the system's status. At their request, we proceed to repair malfunctions. After the checks, inspection certificates required by regulations are issued, which protect the company with respect to legal obligations.





Extraordinary maintenance

An efficient extraordinary maintenance service is also available with 24-hour availability every day. A constantly manned telephone number responds to each call and organizes interventions. Our technicians have fully equipped vans with the necessary operational devices for interventions and the most common spare parts for emergency response. Promptness and quality to ensure the constant maintenance of the efficiency of the systems in order to keep them performing efficiently.



Some of our customers







Sebino S.p.A.

Via Enrico Mattei, 28
24040 Madone (BG) • IT

+39 035 292811
contact@sebino.eu



Sebino Security S.r.l.

Via Portico, 51
24050 Orio al Serio (BG) • IT

+39 035 219429
contact.security@sebino.eu



Sebino Service S.r.l.

Via G. B. Turcotti, 10
15033 Casale Monferrato (AL) • IT

+39 0142 455580
contact.service@sebino.eu



Sebino Fire RO S.r.l.

122B Panduri Street, Warehouse B
077041 Chitila, Ilfov County • RO

+40 214 403363
contact.ro@sebino.eu

Sebino may provide product information (Product Information), including technical information, specifications, recommendations, catalogues, and other materials, to support customers in understanding and selecting products, technologies, and services offered. Sebino does not assume any responsibility for errors in Product Information and reserves the right to modify its products, technologies, and services without notice. Product information does not imply a license related to Sebino's intellectual property. The customer is solely responsible for evaluating and selecting products and technologies and determining if the product, technology, or service is suitable for a particular purpose or application method.

Sebino Fire and Security and SebinoConnect are registered trademarks of Sebino S.p.A. or of Companies of Sebino Group.